



GeoPlaNet Meeting

June 16th 2022



Program

- ▶ 14 :00 - 15 :30 : Presentation of the GeoPlaNet activities and partners (LPG room).
 - ▶ GeoPlaNet (Olivier Verhoeven, Sabrina Carpy, Marie-Pierre Jousse).
 - ▶ LPG-STU Department -Nantes Université (Gaël Choblet, Caroline Dumoulin).
 - ▶ University of Coimbra (Alexandra Pais, João Fernandez).
 - ▶ University of Porto (Manuel Silva).
 - ▶ VR2Planets (François Civet).
 - ▶ University of Chieti-Pescara (Gian Gabriele Ori, Monica Pondrelli).
 - ▶ University of Padova (Matteo Massironi, Ana Breda).
- ▶ 15 :30 - 15 :45 : Group picture (LPG Hall).
- ▶ 15 :45 - 17 :15 : VR demonstration by VR2Planets (LPG 1st floor, VR rooms).
- ▶ 17 :15 - 18 :15 : Transnational Partners Meeting for JPMC members.

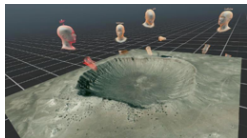
GeoPlaNet story

Aim : promote **education by research in planetary sciences** in STU department of Nantes Université on the basis of excellence of LPG international research collaborations.

2017 : International research and training network funded by the **Région Pays de la Loire**.

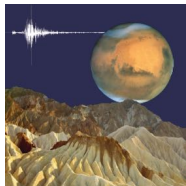


2019 : GeoPlaNExT project funded by **NExT** in order to develop **with our Portuguese and Italian GeoPlaNet Partners** a joint international master program in planetary geosciences.



2020 : Erasmus+ Strategic Partnership GeoPlaNet-SP with the same Partners + VR2Planets in order to share teaching experience and knowledge through organization of joint international learning activities and intellectual outputs.

2021 : Opening of new International Master in Planetary Geosciences M2 Program with 11 students as part of TRITON Earth and Planetary Sciences Graduate Program.



Future : Erasmus Mundus Joint Master Program in Planetary Geosciences ?

LPG

- ▶ Three sites : Nantes, Angers, le Mans.
- ▶ Three themes :
 - ▶ Terre.
 - ▶ Planètes et lunes.
 - ▶ Systèmes littoraux et marins.
- ▶ LPG is involved in 14 space missions for at least the next 5 years with 1 PI-ship (+1co-PI), 23 co-Iships, 21 team members and 2 interdisciplinary scientists in current and forthcoming missions of planetary explorations (NASA, ESA, JAXA).



- ▶ LPG hosts each year a **dozen of research internships at M2 level**, with subjects covering all its fields of expertise, for example :
 - ▶ *Cartography and volume measurement of sediment fans in southern Terra Sabeae, Mars.*
 - ▶ *Characterization of the relative importance of ice in the erosion of Kasei Valles (Mars) by Fourier analysis of inner grooved terrain.*
 - ▶ *Infrared signature of ice powders : experimental approach and application to Enceladus and Europa.*
 - ▶ *Polar minima and core-mantle coupling in geomagnetic field models and numerical dynamo simulations.*
 - ▶ *Role of the atmosphere-interior coupling on the evolution of Venus.*
 - ▶ *Study of the rooting of Armorican shears by analysing the birefringence of SKS-type waves.*
 - ▶ *Characterisation of boulders and rock samples investigated during the Apollo 17 mission.*

Earth and Planetary Sciences (STU) Department

- ▶ One of the six sciences departments of the [Faculté des Sciences et des Techniques de Nantes Université](#).
- ▶ In charge of 5 education programs :
 - ▶ Licence mention Sciences de la Vie et de la Terre.
 - ▶ Licence Professionnelle mention Métiers du BTP : Génie Civil et Construction - parcours Géologie de l'Aménagement.
 - ▶ Diplôme universitaire en Gemmologie.
 - ▶ Master mention Sciences de la Terre et des Planètes, Environnement (STPE).
 - ▶ Master mention Gestion de l'Environnement (GE).



- ▶ [IMPG M2 program](#) is included in [STPE Master](#), and is [M2 part of Earth and Planetary Sciences Graduate Program](#), a new integrated Master-doctorate education program at Nantes Université.